

# DATASHEET

## NB-SEMS-FRT

Face Recognition Access Device with Fever Detection



NB-SEMS-FRT is using intelligent engineering facial recognition algorithms and the latest computer vision technology. It supports both facial and palm verification with large capacity and speedy recognition, as well as improves security performance in all aspects.

NB-SEMS-FRT adopts touchless recognition technology and new functions namely temperature detection and masked individual identification which eliminates hygiene concerns effectively. It is also equipped with ultimate anti-spoofing algorithm for facial recognition against almost all types of fake photos and videos attack. Importantly, the 3-in-1 palm recognition (Palm Shape, Palm Print and Palm Vein) is performed in 0.35 sec per hand; the palm data acquired will be compared with a maximum of 3,000 palm templates.

The terminal with temperature and mask detection will be a perfect choice to help reduce the spread of germs and help prevent infections straightly at each access point of any premises and public areas such as hospitals, factories, schools, commercial buildings, stations during the recent global public health issue with its fast and accurate body temperature measurement and masked individual identification functions during facial and palm verification.

### FEATURES



**Face Recognition**  
Latest visible light facial recognition technology



**Touchless Verification**  
Contactless palm recognition



**Large Capacity**  
Store up to 6,000 faces, 6,000 fingerprint, 3,000 palms and 200,000 transaction logs



**Fever Detection**  
Deny access when fever symptom is detected



**Face Mask Detection**  
Deny access to those who are not wearing a mask

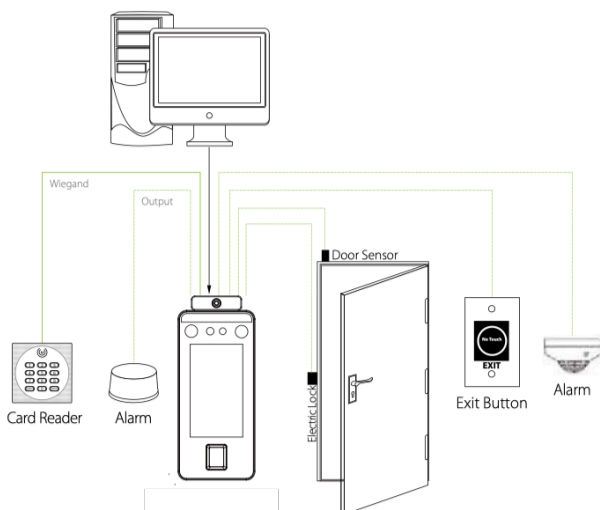


**Compact Design**  
A compact and slim device to fit dimensions of a door frame installation

## SPECIFICATIONS

Display	5-inch Touch Screen
Face Capacity	6,000
Palm Capacity	3,000
Fingerprint Capacity	6,000 (Standard); 10,000 (Optional)
Transactions	200,000
Operation System	Linux
Standard Functions	AWDMS, T9 Input, DST, Camera, 9-digit User ID, Access Levels, Groups, Holidays, Anti-passback, Record Query, Tamper Switch Alarm, Multiple Verify Modes.
Hardware	900MHz Dual Core CPU, Memory 512MB RAM / 8G Flash, 2MP WDR Low Light Camera, Adjustable Light Brightness LED, Build-in Speaker, Fingerprint sensor
Communication	Ethernet 10/100 TCP/IP, Wi-Fi (b/g/n), Wiegand input / output, RS485
Access Control Interface	3rd Party Electric Lock, Door Sensor, Exit Button, Alarm output, Auxiliary Input, Relay I/O
Facial Recognition Speed	≤1s
Preventive Measures	Mask Detection
	Fever Detection
	Fever Measure Distance 30-50cm
	Fever Detection Speed >0.3s
Power Supply	12V 3A
Operating Humidity	10% - 90%
Operating Temperature	16°C ~ 32°C (60.8°F ~ 89.6°F)
Dimensions (W*H*D)	91.93 * 220 * 22.5 (mm)
Mounting	Wall-mount / Turnstile / Barrier Gate

## CONFIGURATION



## DIMENSIONS (MM)

